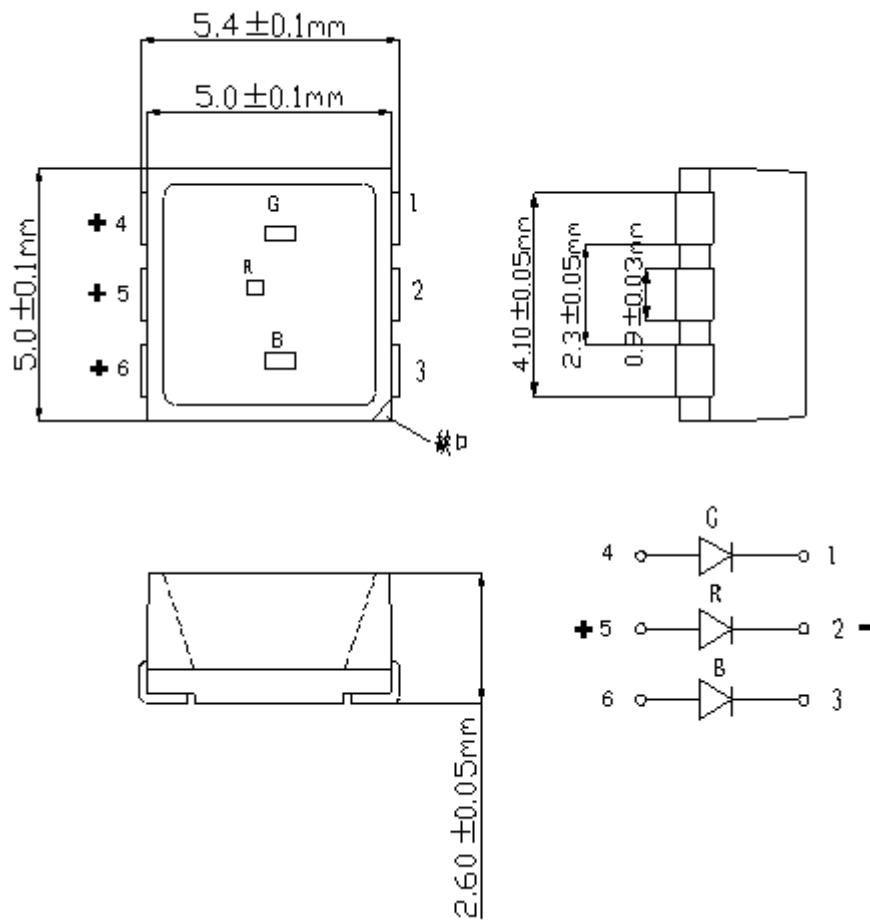


# 承认书

## Approve Sheet

产品 /Product	LED	
型号/Part Number	IE-5050RGB-ST-B04-Y	
发行日期/Issue Date		
客户规格/customer specification		
客户/Customer		
亮度 (mcd)	R:500-700mcd G:1400-1600mcd B:300-500mcd	
电压/VF (V)	R:2.0-2.4V G:3.0-3.4V B:3.0-3.4V	
显色指数/CRI		
备注/remarks		
制定/Maker		
Prepared	Checked	Customer Confirmation

## PackageDimensions:



## Notes

- All dimensions are in millimeters (inches).
- Tolerance is  $\pm 0.25\text{mm}$  (.010") unless otherwise noted.
- Protruded resin under flange is  $1.0\text{mm}$  (.04") max.
- Lead spacing is measured where the leads emerge from the package.
- Specifications are subject to change without notice.

## Absolute Maximum Ratings at TA=25°C

Parameter(参数)	Valce (标准值)			Unit (单位)
	R	G	B	
Power Dissipation (消耗功率)	40	60	60	mW
Pulsed Forward Current (脉冲正向电流) (1/10 Duty Cycle, 0.1ms Pulse width)	100			mA
Continuous Forward Current (连续工作电流)	60			mA
Derating Linear From 50°C (电流比例关系)	0.4			mA/°C
Reverse Voltage (反向电压)	5			V
Operation Temperature Range (工作温度)	-30°C to +80°C			
Storage Temperature Range (储存温度)	-40°C to +80°C			
Lead Soldering Temperature [4mm (.157") From Body] (焊接温度)	260°C for 5 Seconds			

## Electrical / Optical Characteristics at TA=25°C

Parameter	Symbol	Min	Typ.	Max	Unit	Test Condition	
Luminous Intensity(光强)	IV	R	500	--	700	mcd	IF=20mA
		G	1400	--	1600		IF=20mA
		B	300	--	500		IF=20mA
Viewing Angle(发光角度)	2 θ 1/2	110	--	120	deg	Note 2	
wave length(λd)(波长)	R	620	--	625	nm	IF=20mA	
		625		630			
	G	515	--	520		IF=20mA	
		520		525			
		525		530			
	B	460	--	465		IF=20mA	
465			470				
Forward Voltage (R) (电压)	R	2.0	--	2.2	V	IF=20mA	
		2.2		2.4			
	G	3.0	--	3.2		IF=20mA	
		3.2		3.4			
	B	3.0	--	3.2		IF=20mA	
		3.2		3.4			
Reverse Current(反向电流)	IR	--	--	5	μ A	VR=5V	

**Notes :** Luminous intensity is measured with a light sensor and filter combination that approximates the CIE (Commission International De L'Eclairage) eye-response curve.  $1/2$  is the off-axis angle at which the luminous intensity is half the axial luminous and intensity. The dominant wavelength,  $\lambda_d$  is derived from the CIE chromaticity diagram and represents the single wavelength which defines the color of the device. The IV guarantee should be added  $\pm 15\%$ .

## INTENSITY BIN LIMIT (IF=3\*20mA)

### Red

BinCode	Min(mcd)	Max(mcd)
A	500	700

### Green

Bin Code	Min(mcd)	Max(mcd)
A	1400	1600

### Blue

BinCode	Min(mcd)	Max(mcd)
A	300	500

## COLOR BIN LIMIT( IF=3\*20mA)

### Red

BinCode	Min(nm)	Max(nm)
A	620	625
B	625	630

### Green

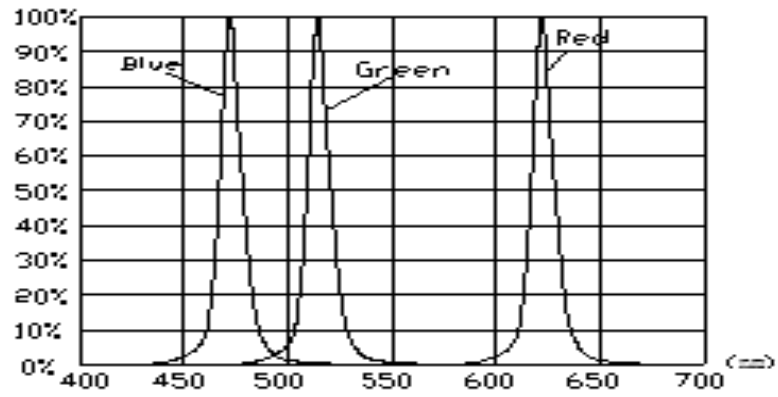
Bin Code	Min(nm)	Max(nm)
A	515	520
B	520	525
C	525	530

### Blue

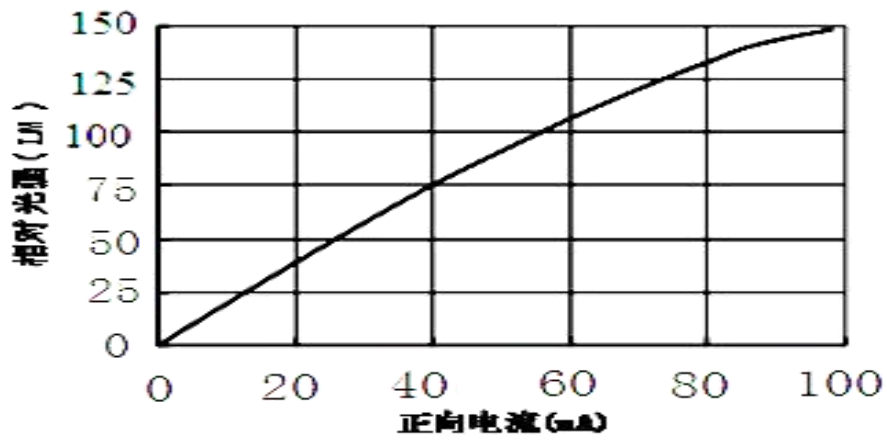
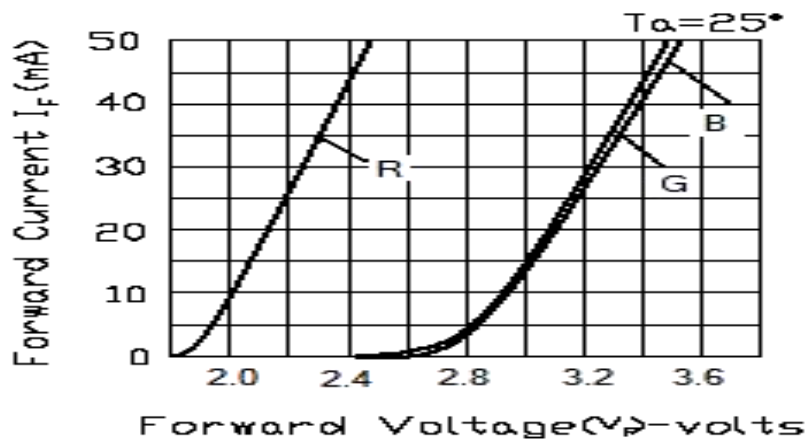
BinCode	Min(nm)	Max(nm)
A	460	465
B	465	470

# Optical Characteristics

光谱曲线图



电压电流关系曲线图

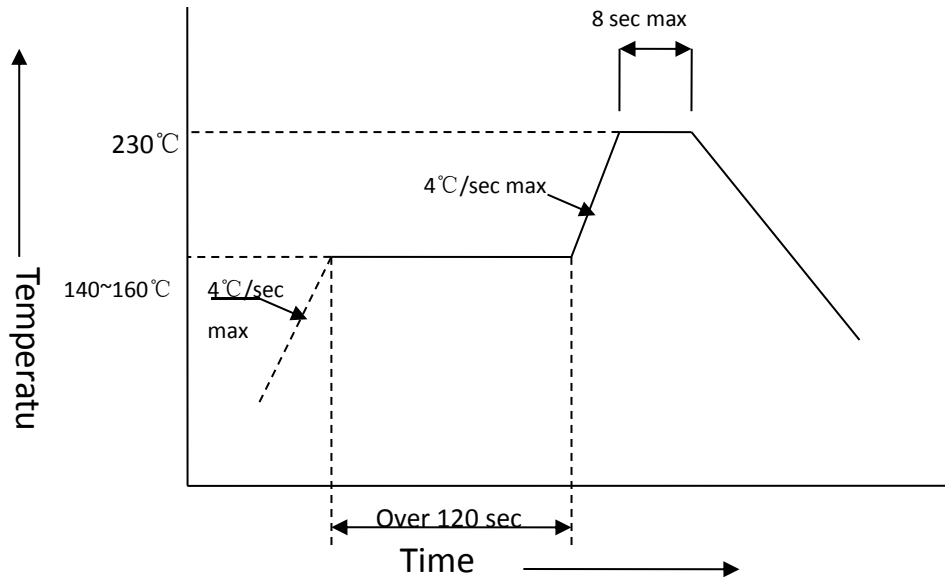


## Reflow Soldering Instructions (回流焊说明)

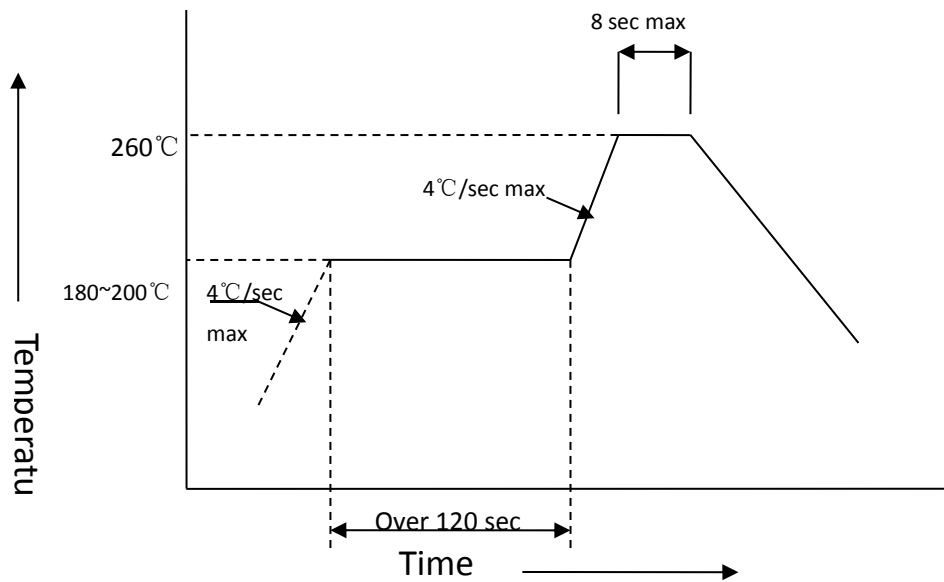
Number of reflow process shall be less than 1 times and cooling

(本产品最多只可回焊一次.)

### 1>Lead Solder (有铅回焊)

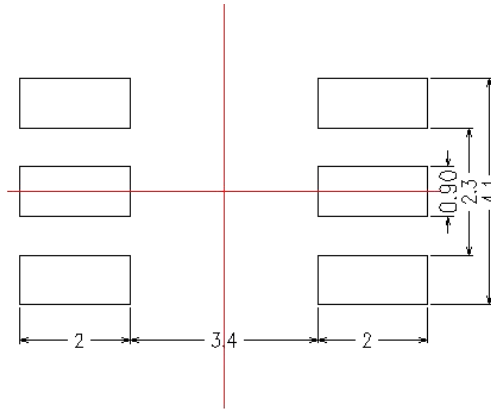


### 2>Lead-Free Solder(无铅回焊)



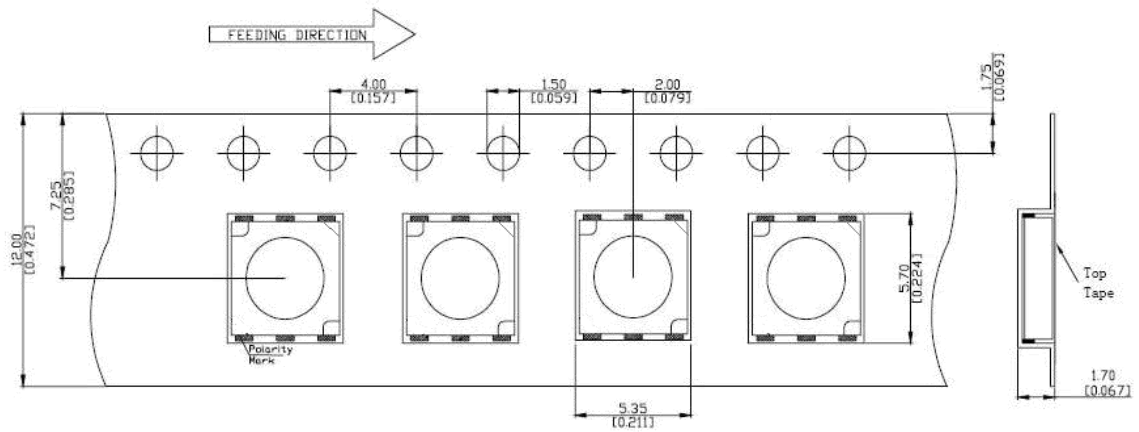
## Recommended Soldering Patter (n推荐焊盘式样)

<Units:mm>(单位:毫米)



## Method of Taping / Polarity and Orientation

Packing unit 1000/reel,  $\phi 180$  mm



Adhesion Strength of Cover Tape : Adhesion strength to be 0.1 – 0.7N when the cover tape is turned off from the carrier at 10° angle to be the carrier tape.(盖带力度：当盖带与载带成10度角时力度为 0.1 – 0.7N)