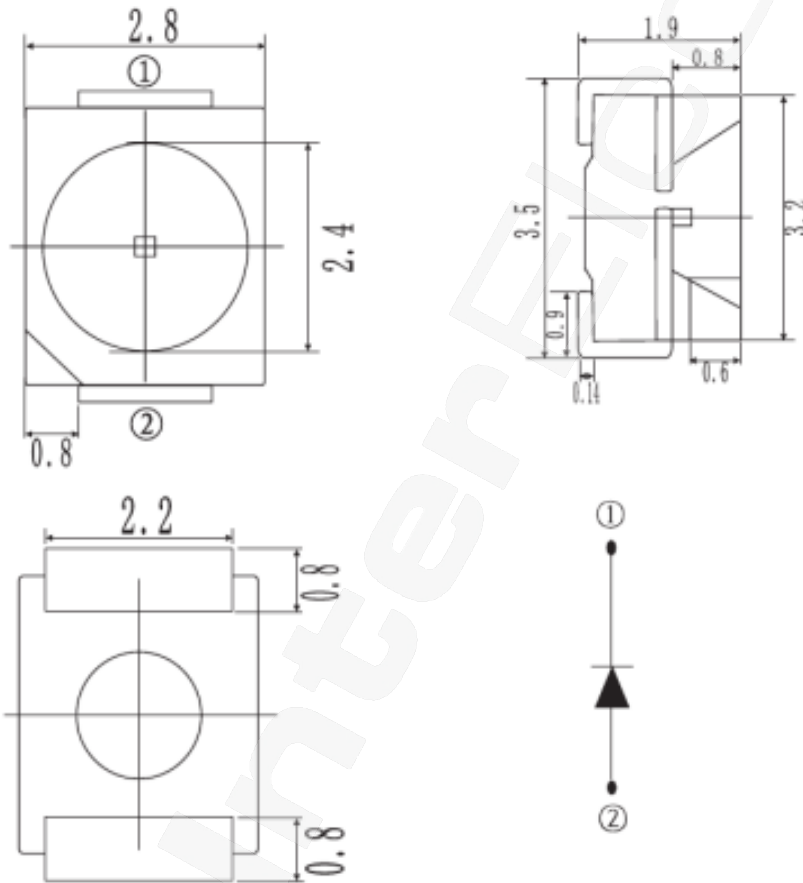


3.5*2.8*1.9mm SMD LED

MODEL NO.: IE-35UR28-10D/J8

Package outlines



ITEM	MATERIALS
Resin (mold)	Silicone
Bonding Wire	φ 25μmAu
Lens color	Water transparent
Printed circuit board	PPA
Dice	—
Emitted color	Red

Notes:

- 1、All dimensions are in mm.
- 2、Tolerance is ±0.25 mm unless otherwise noted.

3.5*2.8*1.9mm SMD LED

 MODEL NO.: IE-35UR28-10D/J8
Absolute maximum ratings (T_A=25°C)

Parameter	Symbol	Value		Unit
		R		
Power dissipation	Pd	60		mW
Forward current	If	30		mA
Reverse voltage	Vr	5		V
Operating temperature range	Top	-40~+100		°C
Storage temperature range	Tstg	-40~+100		°C
Peak pulsing current	Ifp	100		mA
Electrostatic Discharge	ESD	--		V

Electro-optical characteristics (T_A=25°C)

Parameter	Test Condition	Symbol	Value			Unit
			Min.	Typ.	Max.	
Wavelength at peak emission	If=20mA	λ _{peak}	--	--	--	nm
Spectral half bandwidth	If=20mA	Δλ	--	25	--	nm
Dominant wavelength	If=20mA	λ _D	620	--	630	nm
Forward voltage	If=20mA	Vf	1.8	2.1	2.6	V
Luminous intensity	If=20mA	I _v	--	700	--	mcd
Viewing angle at 50% I _v	If=20mA	2θ _{1/2}	--	130	--	Deg
Reverse current	Vr=5V	I _r	--	--	10	μA

NOTE: IFP Conditions: Pulse Width ≤ 10msec. and Duty ≤ 1/10.