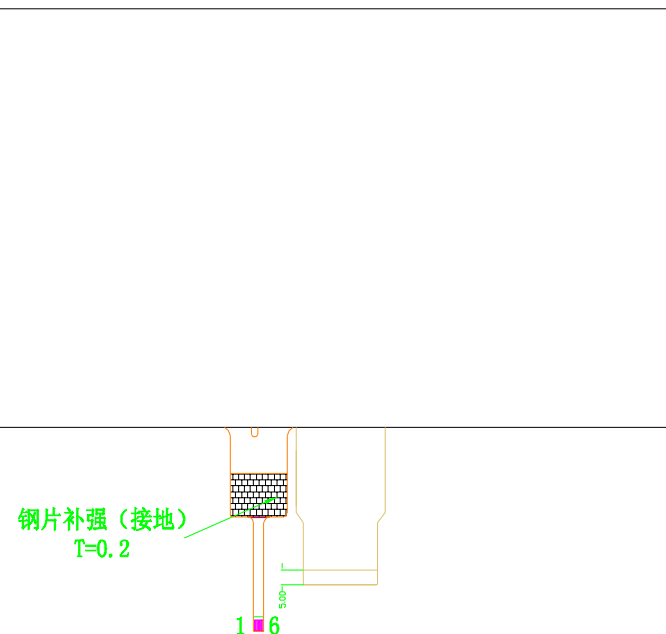
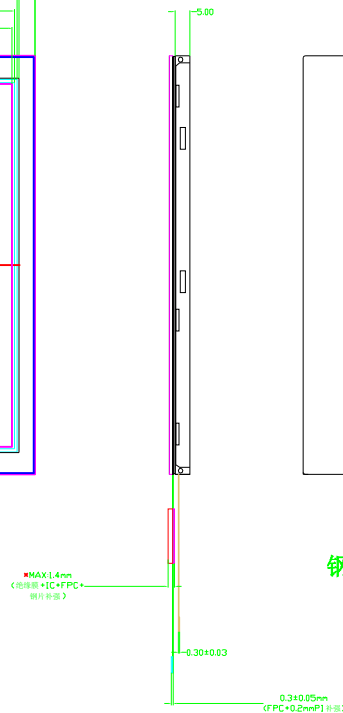
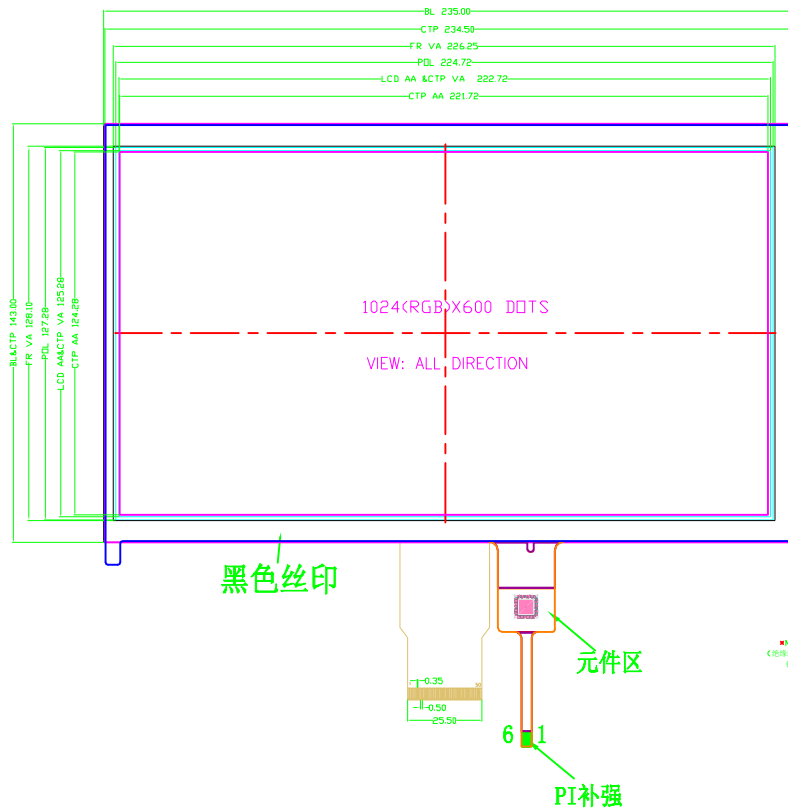
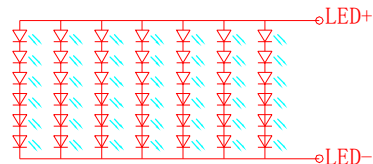


LCD:

Pin	Pin Name
1	VLED+
2	VLED+
3	VLED-
4	VLED-
5	GND
6	VCOM
7	DVDD
8	MODE
9	DE
10	V <sub>S</sub>
11	HS
12	B7
13	B6
14	B5
15	B4
16	B3
17	B2
18	B1
19	B0
20	G7
21	G6
22	G5
23	G4
24	G3
25	G2
26	G1
27	G0
28	R7
29	R6
30	R5
31	R4
32	R3
33	R2
34	R1
35	R0
36	GND
37	DCLK
38	GND
39	L/R
40	U/D
41	VGH
42	VGL
43	AVDD
44	RESET
45	NC
46	VCOM
47	DITHB
48	GND
49	NC
50	NC



LED CIRCUIT DIAGRAM:



CTP:

Pin	Pin Name
1	RST
2	SDA
3	SCL
4	INT
5	VDD
6	GND

NOTES:

- LCD Display Type: 262K TFT, TRANSMISSIVE;
- Backlight:42-chips LED, VLED=18.0V, ILED=140MA;
- LCD View Direction:any angle;
- LCD Driver IC:HX8282-A11+HX8696 ;CTP Driver IC :GT9271 TX31\*RX17
- CTP Type:G+G;
- Operating temperature:-20℃~+70℃;
- Storage temperature:-30℃~+80℃;
- Recommended Case Open Area should be less than Module V.A;
- General Tolerance:±0.3;
- REQUIREMENTS ON ENVIRONMENTAL PROTECTION: RoHS

DRAWN BY:	2025.05.27	IE-SN-2219CH04R24L-C0-1	SCALE:	MATERIAL:
CHECK BY:			1:1	
APPROVER:		UNIT: mm	TOLERANCE: ±0.2	PAGE: 1 of 1

