

---

**MODEL NO. :** IE-G-1316CH03R24-C0-1

**ISSUED DATE:** 2021-10-15

**VERSION :** Ver 1.0

Preliminary Specification

Final Product Specification

**CUSTOMER:** \_\_\_\_\_

APPROVED By	NOTES

PREPARED	CHECKED	APPROVED



---

## TABLE OF CONTENT

1. GENERAL SPECIFICATIONS .....	P3
2. ABSOLUTE MAXIMUM RATING .....	P4
3. ELECTRICAL CHARACTERISTICS.....	P4
4. BACKLIGHT CHARACTERISTICS.....	P10
5. DIMENSIONAL DRAWING .....	P11
6. INTERFACE PIN CONECTIONS .....	P12
7. BLOCK DIAGRAM OF LCM.....	P13
8. OPTICAL CHARACTERISTICS.....	P14
9. TOUCH PANEL SPECIFICATION.....	P17
10. INSPECTION CRITERION.....	P18
11. RELIABILITY AND INSPECTION STANDARD.....	P22
12. PRECAUTIONS FOR USING LCD MODULE.....	P23

---

## 1. GENERAL SPECIFICATIONS

**IE-G-1316CH03R24-C0-1** is a color active matrix LCD module incorporating amorphous silicon **TFT** (Thin Film Transistor). It is composed of a color TFT-LCD panel, driver IC, FPC, and a back light unit. The module display area contains **800x 480**pixels. This product accords with RoHS environmental criterion.

Item	Display Panel	Remark
Size	5.0 inch	/
Display Mode	Normally Black, Transmissive LCD	/
Viewing Direction	Free View	/
Module area(W x H x T)	120.70 x 75.80 x 5.03	mm
Active Area(W x H)	108.00 x 64.80	mm
Number of Dots	800RGB x 480	/
Pixel Pitch(W x H)	0.135 x 0.135	mm
Colors	16.7M	/
Drive IC	/	/
Backlight Type	6 Serial *2 LED	/
Interface Type	24bit RGB	/
Input voltage	3.3	V

## 2. ABSOLUTE MAXIMUM RATINGS

Parameter	Symbol	Min	Max	Unit
Logic Supply Voltage	IOVCC	-0.3	4.0	V
Analog Supply Voltage	VCC	-0.3	4.0	V
Operating temperature	Top	-20	70	°C
Storage temperature	Tst	-30	80	°C
Humidity	RH	--	90%(Max60C)	RH

## 3. ELECTRICAL CHARACTERISTICS

### 3.1 Operating Conditions

Parameter	Symbol	Min	Typ	Max	Unit
Logic Supply Voltage	IOVCC	3.1	3.3	3.6	V
Analog Supply Voltage	VCC	3.1	3.3	3.6	V
Input Current	Idd	-	40	-	mA

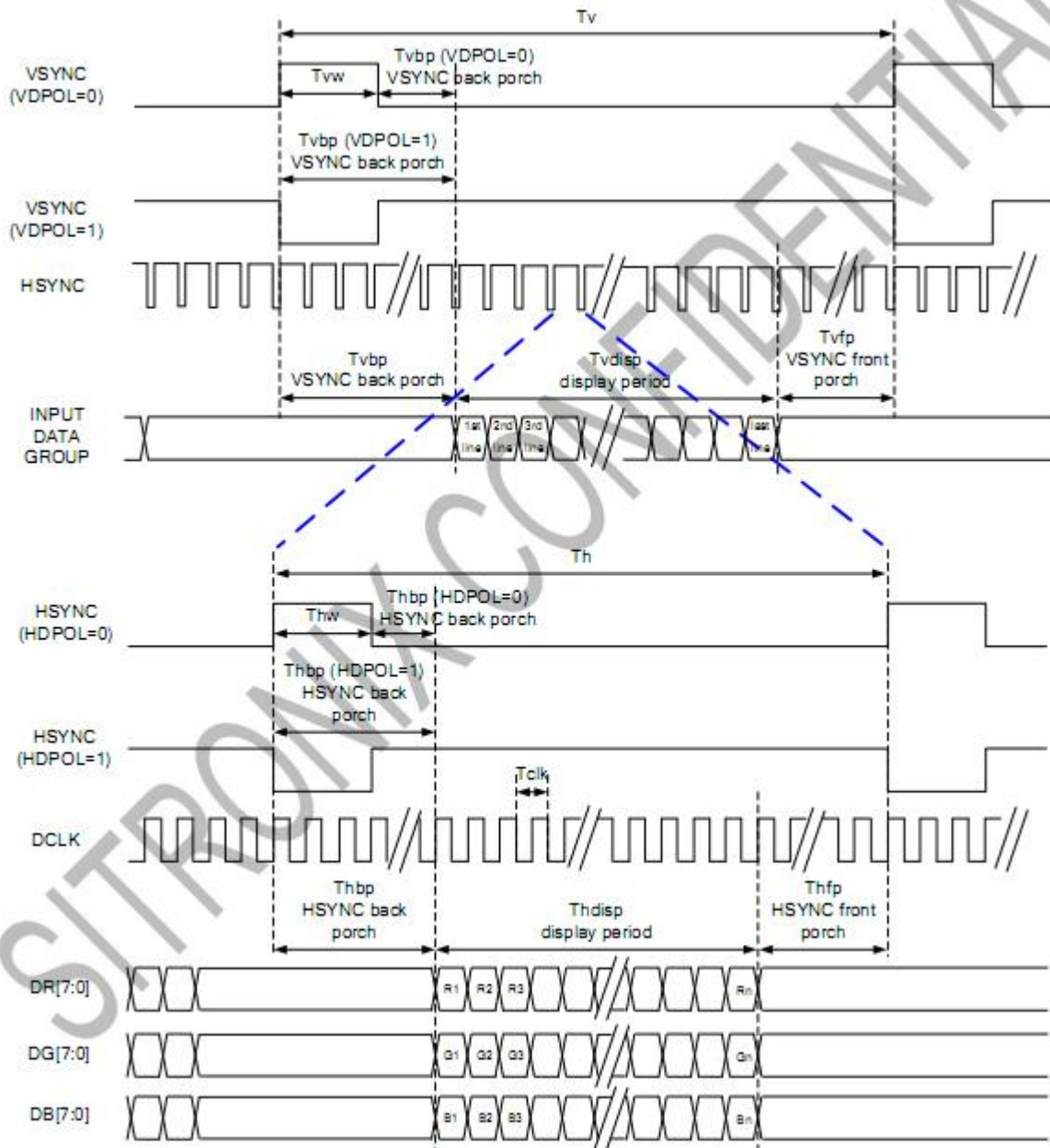
### 3.2 Timing Characteristics

#### 3.2.1 Parallel RGB input timing table

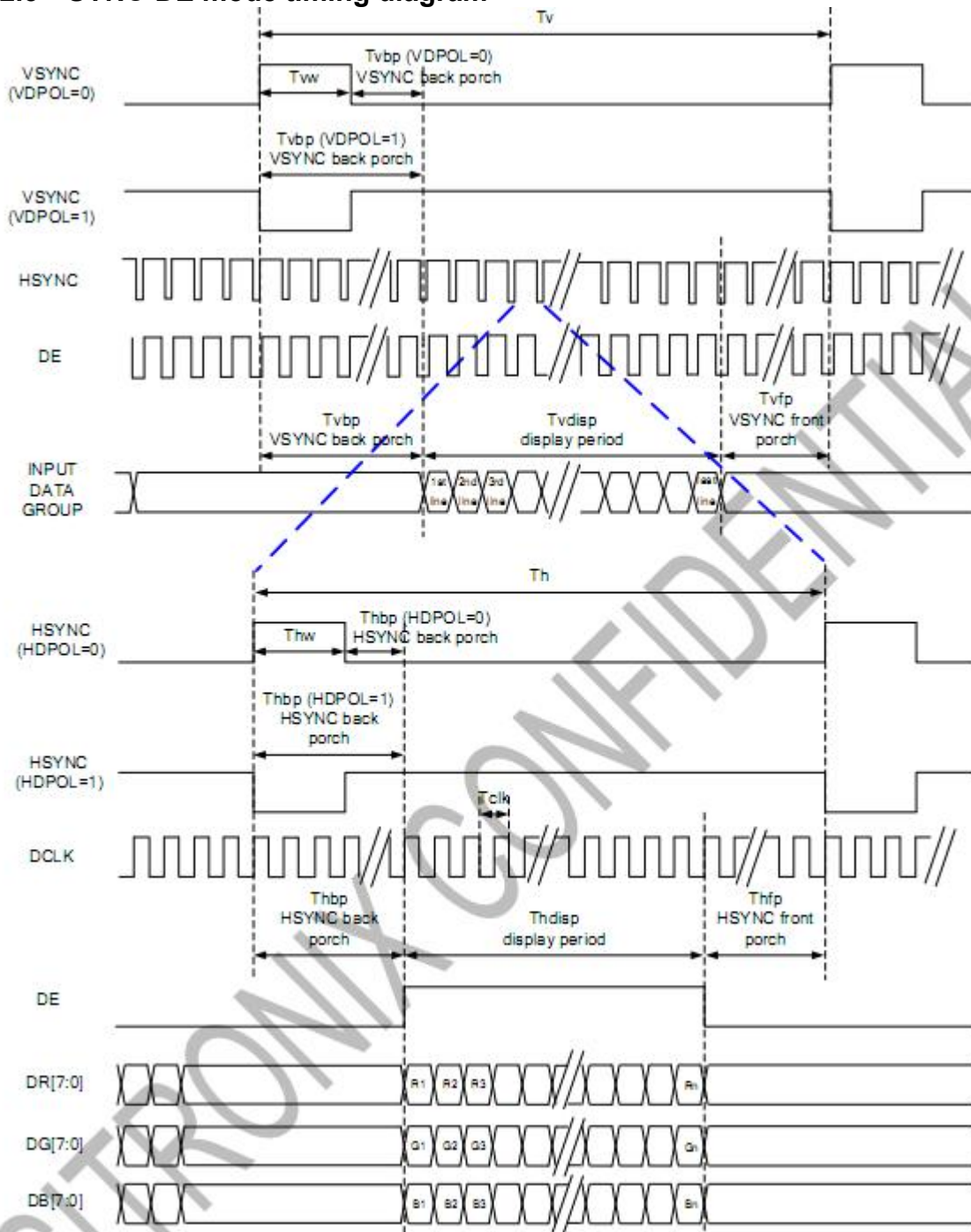
Parallel 24-bit RGB Input Timing (PVDD=VDD=VDDI= 3.3V, AGND= 0V, TA=25°C).

Parallel 24-bit RGB Interface Timing Table							
Item	Symbol	Min.	Typ.	Max.	Unit	Remark	
DCLK Frequency	Fclk	23	25	27	MHz	.	
HSYNC	Period Time	Th	808	816	848	DCLK	
	Display Period	Thdisp	800			DCLK	
	Back Porch	Thbp	4	8	24	DCLK	
	Front Porch	Thfp	4	8	24	DCLK	
	Pulse Width	Thw	2	4	8	DCLK	
VSYNC	Period Time	Tv	496	512	528	HSYNC	
	Display Period	Tvdisp	480			HSYNC	
	Back Porch	Tvbp	8	16	24	HSYNC	
	Front Porch	Tvfp	8	16	24	HSYNC	
	Pulse Width	Tvw	2	4	8	HSYNC	

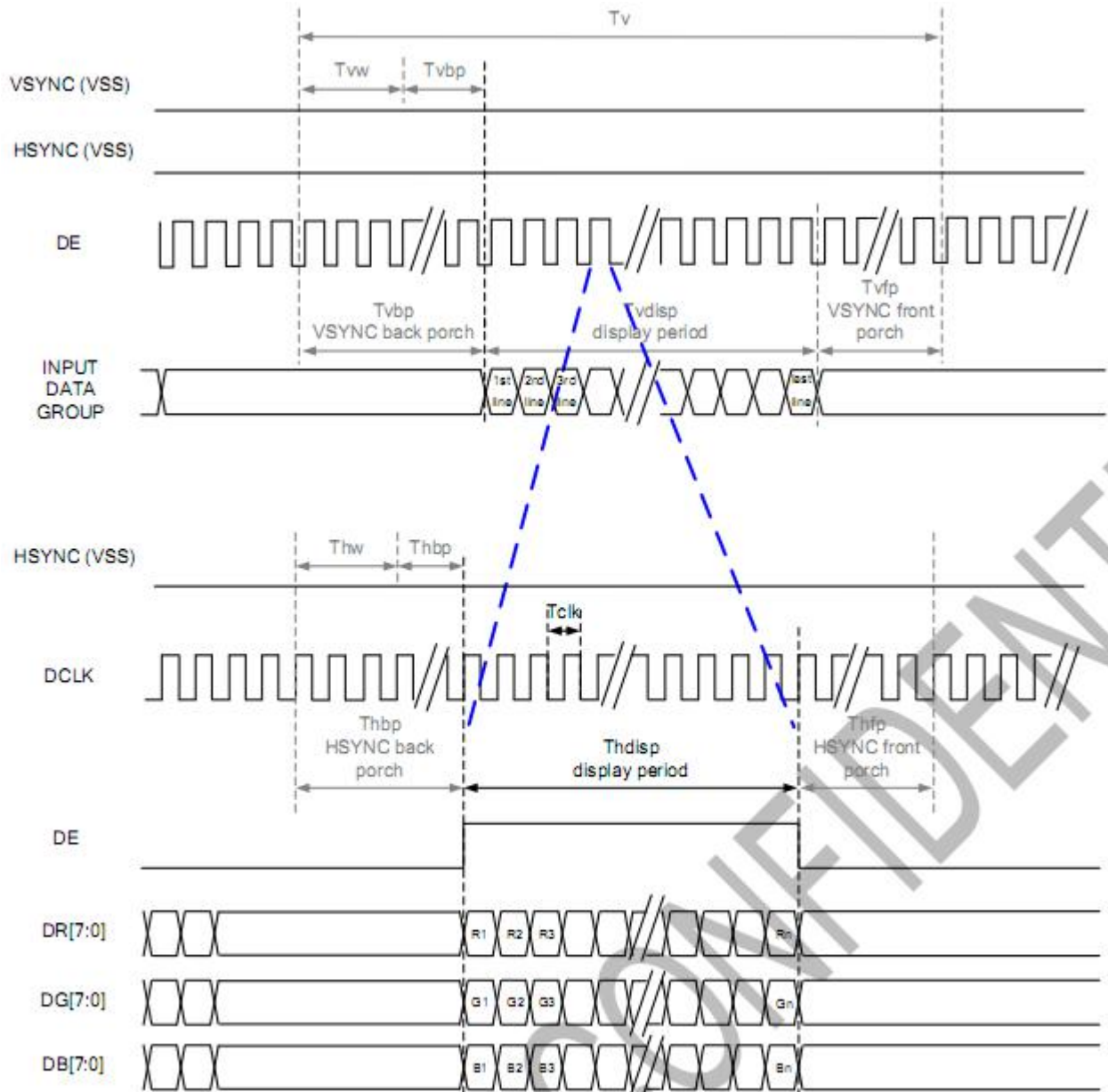
#### 3.2.2 SYNC mode timing diagram



### 3.2.3 SYNC-DE mode timing diagram

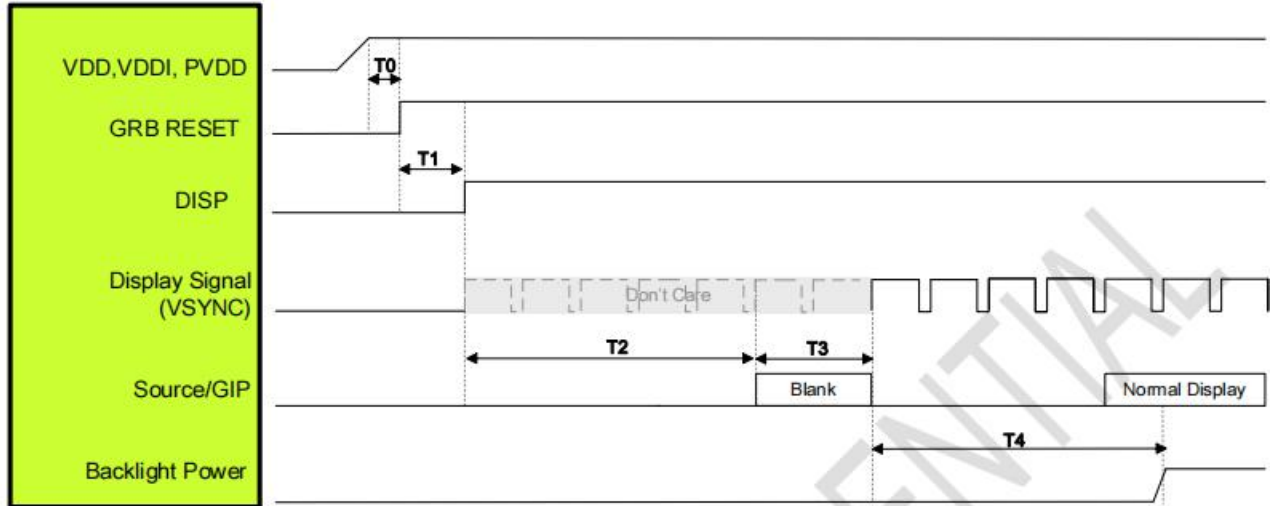


### 3.2.4 DE mode timing diagram



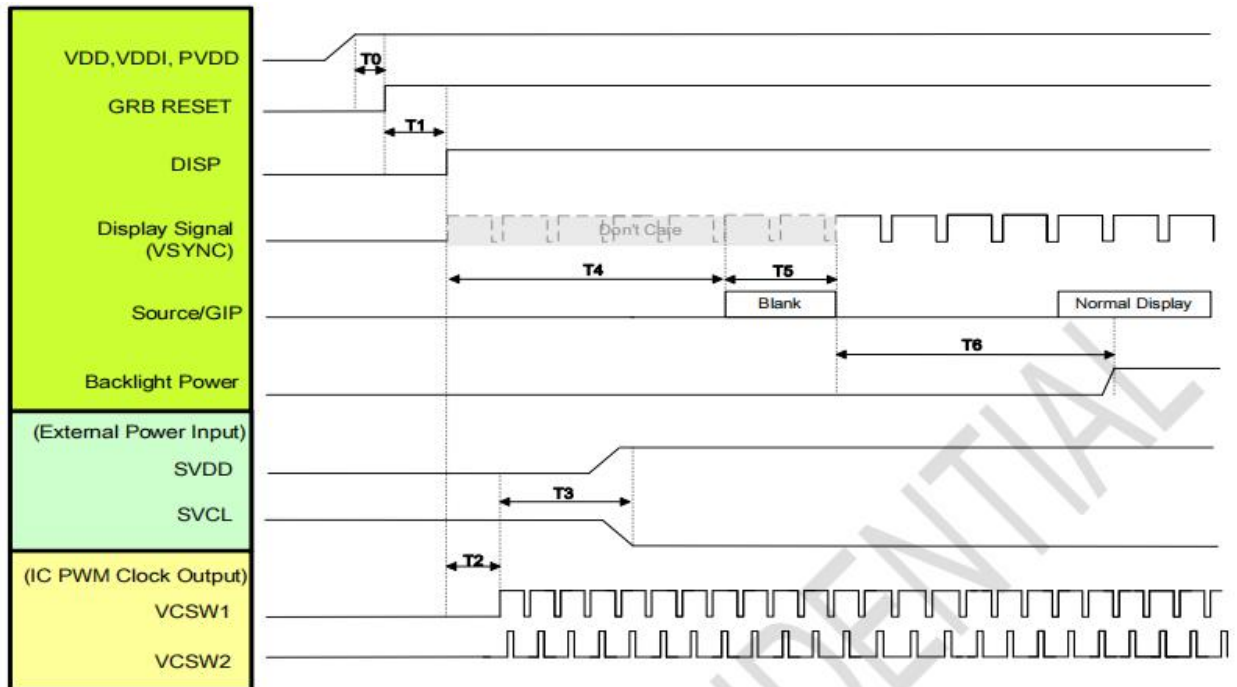
### 3.3 Power ON/OFF Sequence

#### 3.3.1 Power on sequence



Symbol	Description	Time	Unit
T0	System power stability to GRB RESET signal	≥1	ms
T1	GRB RESET= "High" to DISP="High"	≥10	ms
T2	DISP="High" to Source/GIP scan blank	85	ms
T3	IC scan blanking signal	≥33	ms
T4	Display signal input to Backlight power on (base on Display Signal Frame Rate 60Hz)	≥100	ms

### 3.3.2 Power on sequence



Symbol	Description	Time	Unit
T0	System power stability to GRB RESET signal	≥1	ms
T1	GRB RESET= "High" to DISP= "High"	≥10	ms
T2	DISP="High" to IC output PWM clock	1	ms
T3	PWM clock input to SVDD/SVCL stability	≤50	ms
T4	DISP="High" to Source/GIP scan blank	85	ms
T5	IC scan blanking signal	≥33	ms
T6	Display Signal input to Backlight power on (base on Display Signal Frame Rate 60Hz)	≥100	ms

---

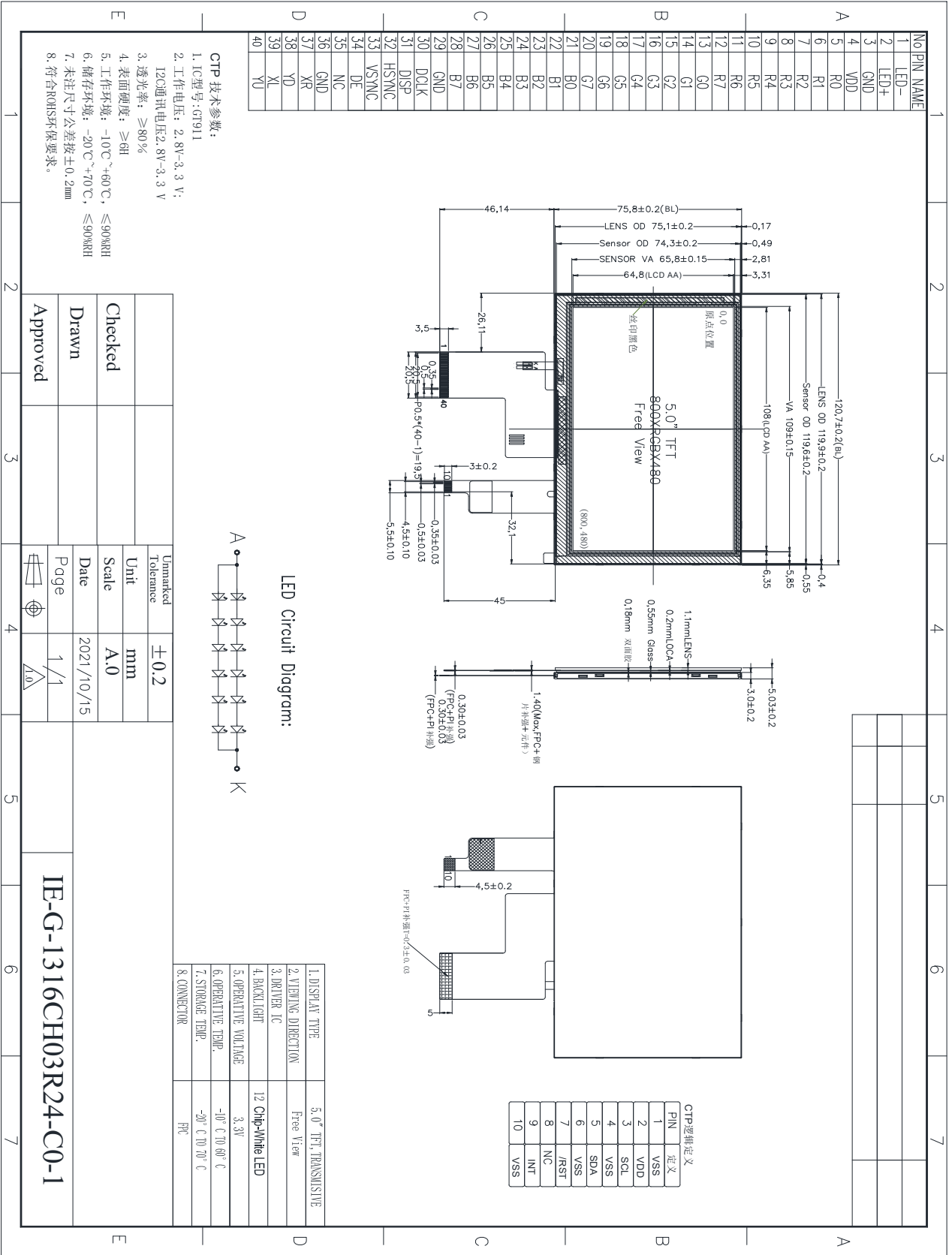
#### 4. BACKLIGHT CHARACTERISTICS

Item	Symbol	Min	Typ.	Max	Unit	Remark
Forward Voltage	Vf	--	18	--	V	Note 1
Forward Current	If	--	40	-	mA	--
Operating Life Time	--	--	30000	--	Hrs	Note 2

Note 1: The LED Supply Voltage is defined by the number of LED at Ta=25°C

Note 2: Operating life means brightness goes down to 50% initial brightness. Typical operating life time is estimated data.

# 5. DIMENSIONAL DRAWING



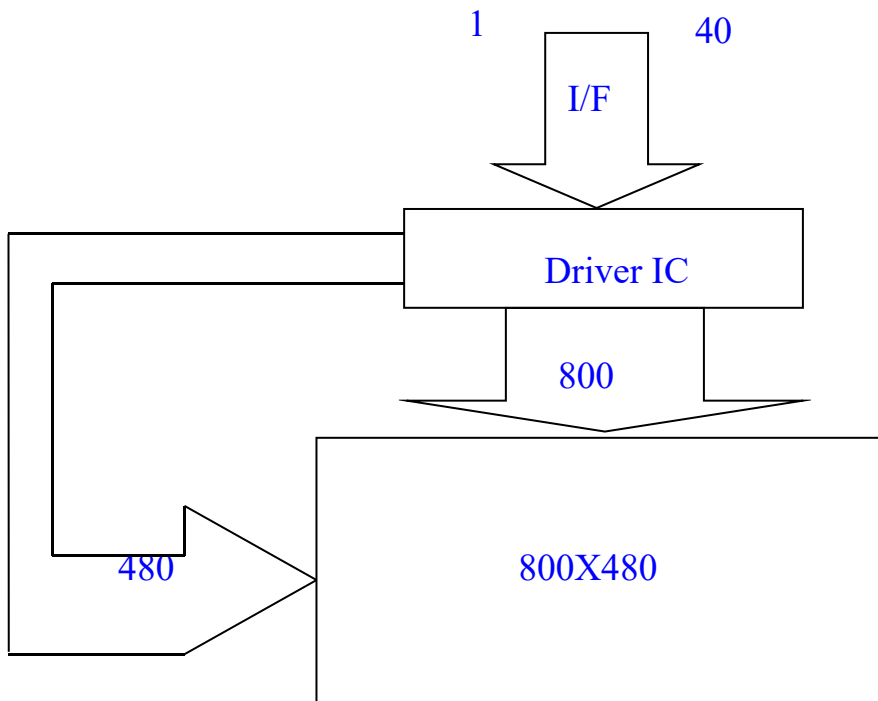
---

## 6. INTERFACE PIN CONNECTIONS

Pin.No	Symbol	Function
1	LED-	back light power supply negative
2	LED+	back light power supply positive
3	GND	Ground
4	VDD	Power supply
5-12	R0-R7	Red Data
13-20	G0-G7	Green Data
21-28	B0-B7	Blue Data
29	GND	Ground
30	DCLK	Clock signal
31	DISP	Display on/off
32	HSYNC	Horizontal sync input in RGB mode(short to GND if not used)
33	VSYNC	Vertical sync input in RGB mode(short to GND if not used)
34	DE	Data enable.
35	NC	No Connection
36	GND	Ground
37	XR	NC
38	YD	NC
39	XL	NC
40	YU	NC

---

## 7. BLOCK DIAGRAM OF LCM



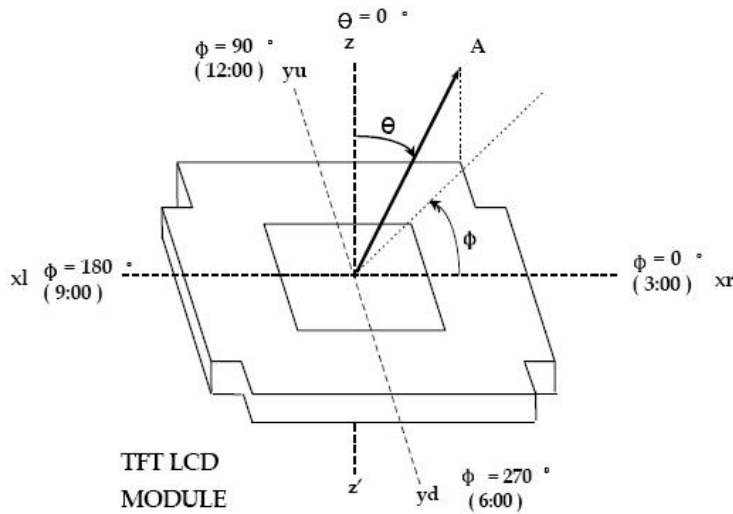
## 8. ELECTRO-OPTICAL CHARACTERISTICS

Optical characteristics are determined after the unit has been on and stable for approximately 30 minutes dark environment at 25°C. The value specified are at an approximate distance 500mm from the LCD surface at a viewing angle and  $\theta$  equal to 0.

### 8.1 LCD Optical Characteristics

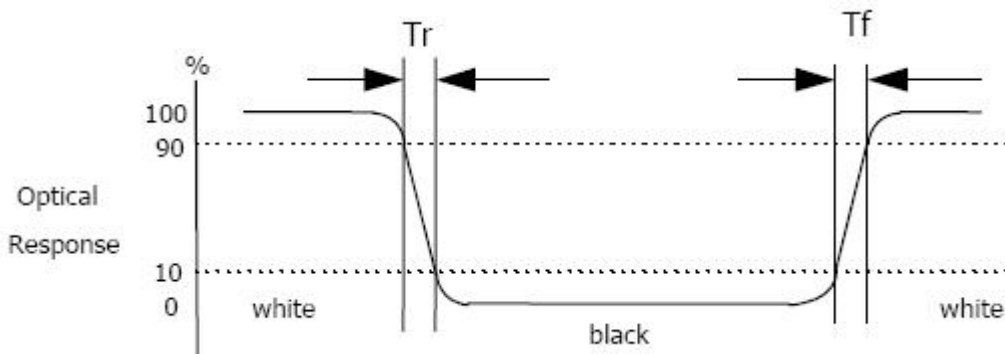
Parameter		Symbol	Condition	Min.	Typ.	Max.	Unit	Remark
Viewing Angle	$\Phi=3$ O'clock	$\theta$	$Cr > 10$	70	80	-	deg	Note 1
	$\Phi=9$ O'clock			70	80	-		
	$\Phi=6$ O'clock			70	80	-		
	$\Phi=12$ O'clock			70	80	-		
Response time		Tr+Tf	$\theta=0$	30	40	-	ms	Note 2
Contrast ratio		Cr	$\Phi=0$	1000	1500	-	-	Note 3
CIE(x,y) Chromaticity	RED	X	$\theta=0$ $\Phi=0$	-0.02	0.638	+0.02	-	Note 4
		Y			0.338			
	GREEN	X			0.296			
		Y			0.575			
	BLUE	X			0.137			
		Y			0.124			
	WHITE	X			0.318			
		Y			0.341			
Uniformity(%)		-	-	80%		-	-	Note 5
Luminance		L	-	-	300	-	-	Note 6

**Note 1. LCD Viewing Angle**



Viewing angle is the angle at which the contrast ratio is greater than 10. The angles are determined for the horizontal or x axis and the vertical or y axis with respect to the z axis which is normal to the LCD surface.

**Note 2. Response time**



Response time is the time required for the display to transition from white to black (Rising time,  $T_r$ ) and from black to white (Falling time,  $T_f$ ). For additional information

**Note 3. Contrast Ratio(CR)**

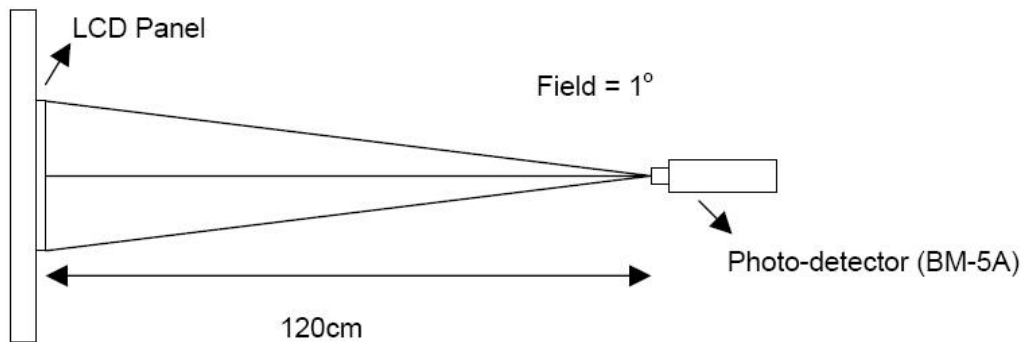
Contrast Ratio(CR) is defined mathematically as:

$$\text{Contrast Ratio} = \frac{\text{Surface Luminance with all white pixels}}{\text{Surface Luminance with all black pixels}}$$

Surface luminance is the center point across the LCD surface 500mm from the surface with all pixels displaying white.

---

**Note 4. Definition of optical measurement setup**

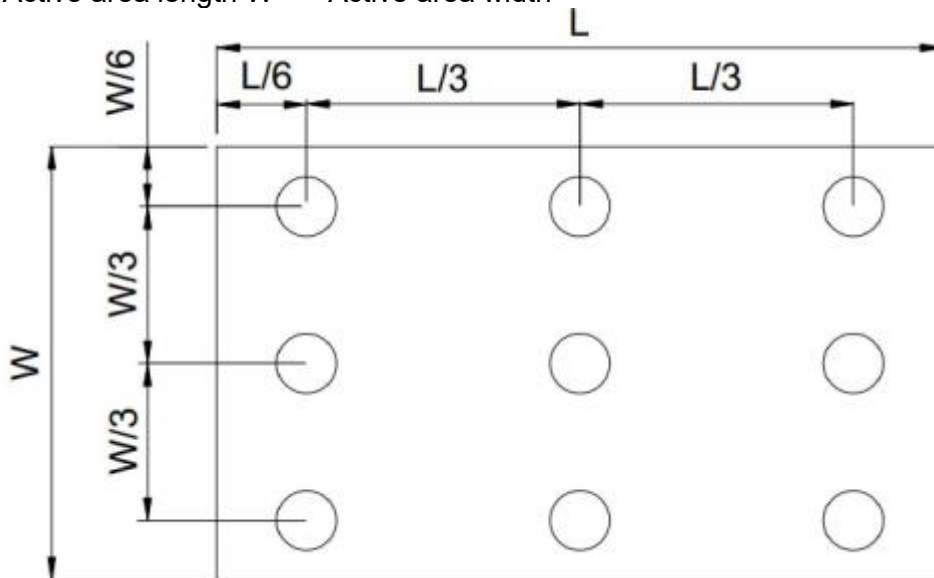


**Note 5. Definition of luminance uniformity**

Active area is divided into 9 measuring areas . Every measuring point is placed at the center of each measuring area.

$$\text{Luminance Uniformity}(U) = L_{\min} / L_{\max}$$

L-----Active area length W----- Active area width



L<sub>max</sub>: The measured maximum luminance of all measurement position.

L<sub>min</sub>: The measured minimum luminance of all measurement position.

**Note 6. Definition of luminance:**

Measure the luminance of white state at center point.

---

## 9. TOUCH PANEL SPECIFICATION

### 9.1 General Specification1

Item	Display Panel	Remark
Outline Dimension	119.90.76 x 75.10 x 2.03	mm
View Area	109.00 x 65.80	mm
Touch Panel Structure	G + G	/
Surface Hardness	≧6H	/
Controller IC	GT911	/
Interface Type	IIC	/

### 9.2 FPC PIN Assignment

Pin.No	Symbol	Function
1	VSS	Power Ground
2	VDD	Power Supply
3	SCL	IIC clock for the data input
4	VSS	Power Ground
5	SDA	IIC Data input
6	VSS	Power Ground
7	RST	Reset pin for the TP
8	NC	NC
9	INT	Interrupt for the TP
10	VSS	Power Ground

---

## 10. INSPECTION CRITERIA

### 10.1 Inspection Conditions

#### 10.1.1 Environmental conditions

The environmental conditions for inspection shall be as follows

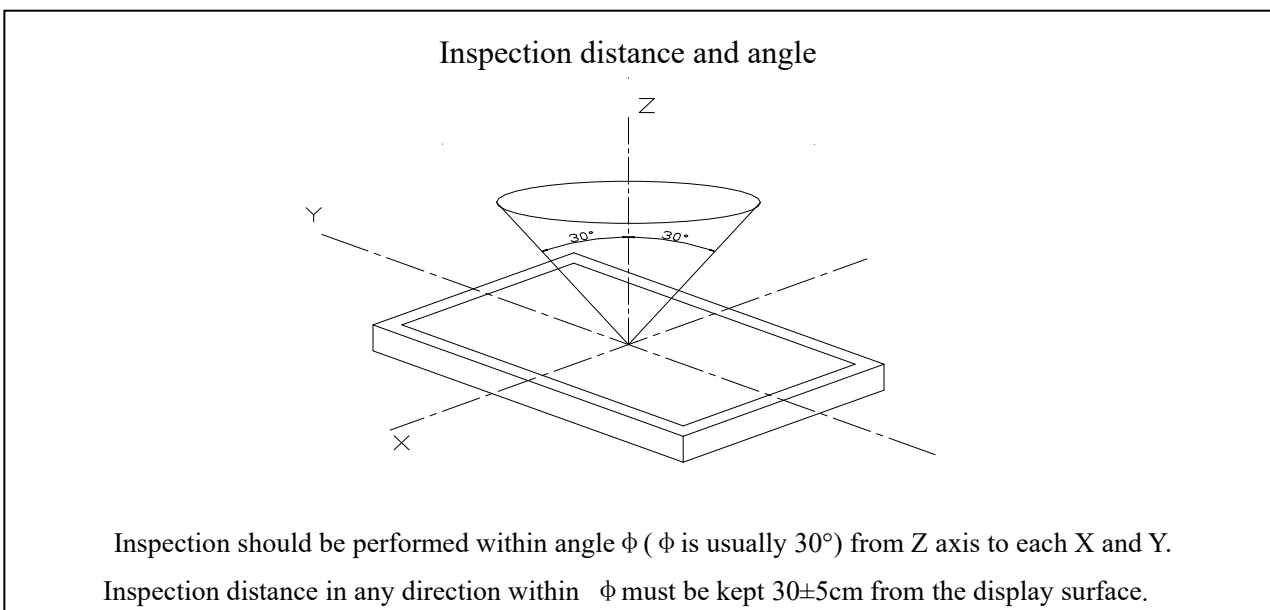
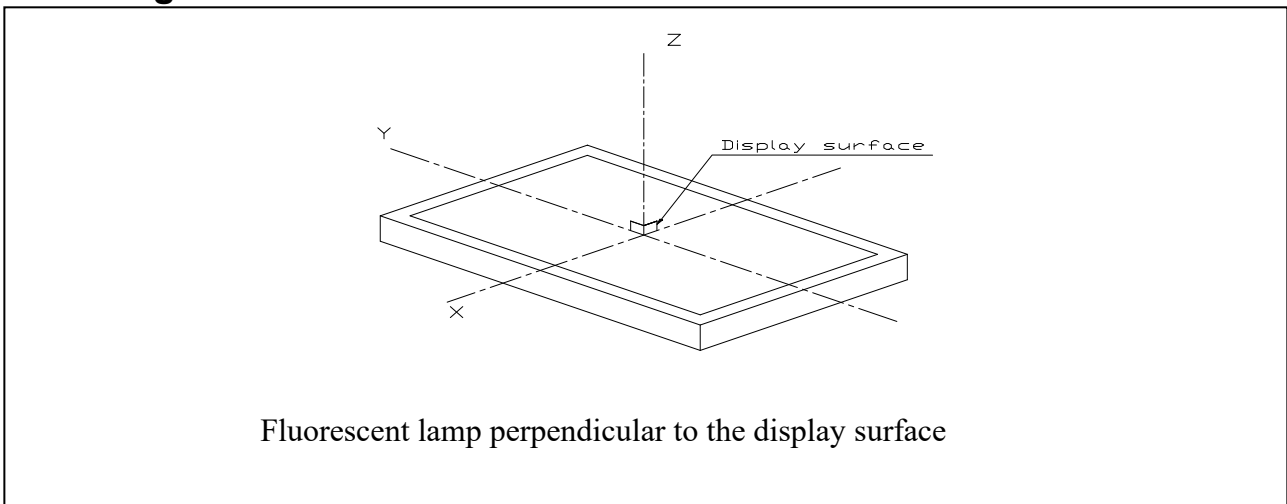
Room temperature:  $20\pm 3^{\circ}\text{C}$

Humidity:  $65\pm 20\% \text{RH}$

#### 10.1.2 Environmental conditions

With a single 20-watt fluorescent lamp as the light source, the inspection was in the distance of 30cm or more from the LCD to the inspector's eyes.

### 10.2 Light Method

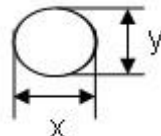



## 10.3 Classification of defects

### 10.3.1 Major defect

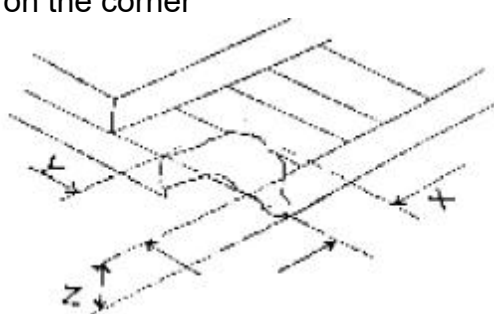
No.	Item	Inspection Standard	Classification of defects
1	All functional defects	1) No display 2) Display abnormally 3) Open or missing segment 4) Short circuit 5) Excess power consumption 6) Backlight no lighting, flickering and abnormal lighting	Major
2	Missing	Missing component	Major
3	Outline dimension	Overall outline dimension beyond the drawing is not allowed	Major

### 10.3.2 Cosmetic Defect

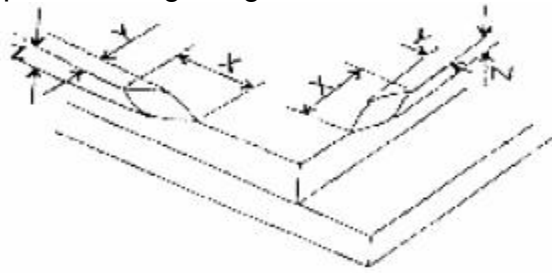
No.	Item	Inspection Standard	Classification of defects							
1	(spot defect) Black and White spot pinhole	For dark/white spot, size $\Phi$ is defined as $\Phi=(x+y)/2$	Minor							
		 <table border="1" data-bbox="467 1413 1171 1682"> <thead> <tr> <th>Size <math>\Phi</math> (mm)</th> <th>Acceptable Quantity</th> </tr> </thead> <tbody> <tr> <td><math>\Phi \leq 0.1</math></td> <td>Ignore</td> </tr> <tr> <td><math>0.10 \leq \Phi \leq 0.2</math></td> <td>2</td> </tr> <tr> <td><math>0.2 \leq \Phi \leq 0.3</math></td> <td>2</td> </tr> <tr> <td><math>0.3 &lt; \Phi</math></td> <td>0</td> </tr> </tbody> </table>		Size $\Phi$ (mm)	Acceptable Quantity	$\Phi \leq 0.1$	Ignore	$0.10 \leq \Phi \leq 0.2$	2	$0.2 \leq \Phi \leq 0.3$
Size $\Phi$ (mm)	Acceptable Quantity									
$\Phi \leq 0.1$	Ignore									
$0.10 \leq \Phi \leq 0.2$	2									
$0.2 \leq \Phi \leq 0.3$	2									
$0.3 < \Phi$	0									
2	(line defect) Black and White line	Define: 	Minor							

	Polarizer scratch	<table border="1"> <tr> <td>Width(mm) Length(mm)</td> <td>Acceptable Qty</td> </tr> <tr> <td><math>\Phi \leq 0.03</math> <math>L \leq 1.0</math></td> <td>Ignore</td> </tr> <tr> <td><math>0.03 &lt; W \leq 0.05</math></td> <td><math>L \leq 3.0</math>; <math>N \leq 2</math></td> </tr> <tr> <td><math>0.05 &lt; W</math> or <math>L &gt; 3.0</math></td> <td>Define as spot defect</td> </tr> </table>	Width(mm) Length(mm)	Acceptable Qty	$\Phi \leq 0.03$ $L \leq 1.0$	Ignore	$0.03 < W \leq 0.05$	$L \leq 3.0$ ; $N \leq 2$	$0.05 < W$ or $L > 3.0$	Define as spot defect			
Width(mm) Length(mm)	Acceptable Qty												
$\Phi \leq 0.03$ $L \leq 1.0$	Ignore												
$0.03 < W \leq 0.05$	$L \leq 3.0$ ; $N \leq 2$												
$0.05 < W$ or $L > 3.0$	Define as spot defect												
3	Polarizer defect	<p>Dent or bubble(between the polarizer and glass)</p> <table border="1"> <tr> <td>Size <math>\Phi</math>(mm)</td> <td>Acceptable Qty</td> </tr> <tr> <td><math>\Phi \leq 0.10</math></td> <td>Ignore</td> </tr> <tr> <td><math>0.10 \leq \Phi \leq 0.2</math></td> <td>2</td> </tr> <tr> <td><math>0.2 \leq \Phi \leq 0.3</math></td> <td>2</td> </tr> <tr> <td><math>0.3 &lt; \Phi</math></td> <td>0</td> </tr> </table>	Size $\Phi$ (mm)	Acceptable Qty	$\Phi \leq 0.10$	Ignore	$0.10 \leq \Phi \leq 0.2$	2	$0.2 \leq \Phi \leq 0.3$	2	$0.3 < \Phi$	0	Minor
Size $\Phi$ (mm)	Acceptable Qty												
$\Phi \leq 0.10$	Ignore												
$0.10 \leq \Phi \leq 0.2$	2												
$0.2 \leq \Phi \leq 0.3$	2												
$0.3 < \Phi$	0												

### 9.3.3 Cosmetic Defect

No.	Item	Inspection Standard	Classification of defects						
1	Glass defect	<p>1) Chip on the corner</p>  <table border="1"> <tr> <td>X</td> <td>Y</td> <td>Z</td> </tr> <tr> <td><math>\leq 3.0</math></td> <td><math>\leq S</math></td> <td><math>\leq T</math></td> </tr> </table> <p>Remark: S=contact pad length; T=the thickness of glass</p> <p>Chips on the corner of terminal shall not be allowed to extend into the ITO pad or expose perimeter seal. Acceptable Quantity <math>N \leq 2</math>.</p>	X	Y	Z	$\leq 3.0$	$\leq S$	$\leq T$	Minor
X	Y	Z							
$\leq 3.0$	$\leq S$	$\leq T$							

2) Chip on the edge of glass



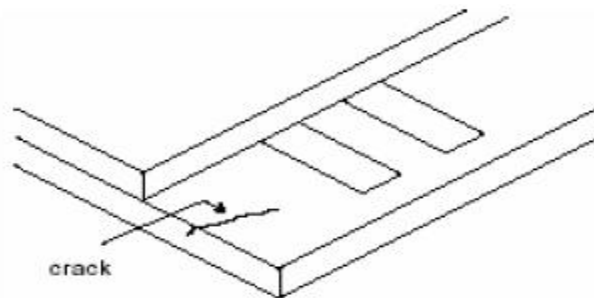
X	Y	Z
Ignore	$\leq 0.5$	$\leq T$

Acceptable Quantity:  $N \leq 2$

Minor

3) Creak

Creaks tend to break are not allowed.



Minor

## 11. RELIABILITY AND INSPECTION STANDARD

NO.	Test Item	Test condition	Criterion
1	High Temperature Storage	80°C±2°C 96H Restore 2H at 25°C Power off	After testing, cosmetic and electrical defects should not happen.
2	Low Temperature Storage	-30°C±2°C 96H Restore 2H at 25°C Power off	
3	High Temperature Operation	70°C±2°C 96H Restore 2H at 25°C Power on	
4	Low Temperature Operation	-20°C±2°C 96H Restore 2H at 25°C Power on	
5	High Temperature & Humidity Storage	60°C±2°C 90%RH 96H Power off	
6	Temperature Cycle	--30°C ↔ 25°C ↔ 80°C 30min 5min 30min after 10cycle, Restore 2H at 25°C Power off	
7	Vibration Test	10Hz~150Hz, 100m/s <sup>2</sup> , 120min	
8	Shock Test	Half-sinewave, 300m/s <sup>2</sup> , 11ms	
9	Drop Test(package state)	600mm, concrete floor, 1corner, 3edges, 6 sides each time	1.After testing, cosmetic and electrical defects should not happen. 2.The product should remain at initial place. 3.Product uncovered or package broken is not permitted.

---

## 12.PRECAUTIONS FOR USING LCD MODULE

### 12.1 Handing Precautions

- (1) The display panel is made of glass and polarizer. As glass is fragile, it tends to become or chipped during handling especially on the edges. Please avoid dropping or jarring. Do not subject it to a mechanical shock by dropping it or impact.
- (2) If the display panel is damaged and the liquid crystal substance leaks out, be sure not to get any in your mouth. If the substance contacts your skin or clothes, wash it off using soap and water.
- (3) Do not apply excessive force to the display surface or the adjoining areas since this may cause the color tone to vary. Do not touch the display with bare hands. This will stain the display area and degraded insulation between terminals (some cosmetics are determined to the polarizer).
- (4) The polarizer covering the display surface of the LCD module is soft and easily scratched. Handle this polarizer carefully. Do not touch, push or rub the exposed polarizers with anything harder than an HB pencil lead (glass, tweezers, etc.). Do not put or attach anything on the display area to avoid leaving marks on. Condensation on the surface and contact with terminals due to cold will damage, stain or dirty the polarizer. After products are tested at low temperature they must be warmed up in a container before coming in contact with room temperature air.
- (5) If the display surface becomes contaminated, breathe on the surface and gently wipe it with a soft dry cloth. If it is heavily contaminated, moisten cloth with one of the following solvents
  - Isopropyl alcohol
  - Ethyl alcoholDo not scrub hard to avoid damaging the display surface.
- (6) Solvents other than those above-mentioned may damage the polarizer. Especially, do not use the following.
  - Water
  - Ketone
  - Aromatic solventsWipe off saliva or water drops immediately, contact with water over a long period of time may cause deformation or color fading. Avoid contacting oil and fats.
- (7) Exercise care to minimize corrosion of the electrode. Corrosion of the electrodes is accelerated by water droplets, moisture condensation or a current flow in a high-humidity environment.
- (8) Install the LCD Module by using the mounting holes. When mounting the LCD module make sure it is free of twisting, warping and distortion. In particular, do not forcibly pull or bend the I/O cable or the backlight cable.
- (9) Do not attempt to disassemble or process the LCD module.

- 
- (10) NC terminal should be open. Do not connect anything.
- (11) If the logic circuit power is off, do not apply the input signals.
- (12) Since LCM has been assembled and adjusted with a high degree of precision, avoid applying excessive shocks to the module or making any alterations or modifications to it.
- Do not alter, modify or change the shape of the tab on the metal frame.
  - Do not make extra holes on the printed circuit board, modify its shape or change the positions of components to be attached.
  - Do not damage or modify the pattern writing on the printed circuit board.
  - Absolutely do not modify the zebra rubber strip (conductive rubber) or heat seal connector.
  - Except for soldering the interface, do not make any alterations or modifications with a soldering iron.
  - Do not drop, bend or twist LCM.

## **12.2 Storage Precautions**

When storing the LCD modules, the following precaution is necessary.

- (1) Store them in a sealed polyethylene bag. If properly sealed, there is no need for the dessicant.
- (2) Store them in a dark place. Do not expose to sunlight or fluorescent light, keep the temperature between 0°C and 35°C.
- (3) The polarizer surface should not come in contact with any other objects. (We advise you to store them in the container in which they were shipped).

## **12.3 Others**

Liquid crystals solidify under low temperature (below the storage temperature range) leading to defective orientation or the generation of air bubbles (black or white). Air bubbles may also be generated if the module is subject to a low temperature.

If the LCD modules have been operating for a long time showing the same display patterns, the display patterns may remain on the screen as ghost images and a slight contrast irregularity may also appear. A normal operating status can be regained by suspending use for some time. It should be noted that this phenomenon does not adversely affect performance reliability.