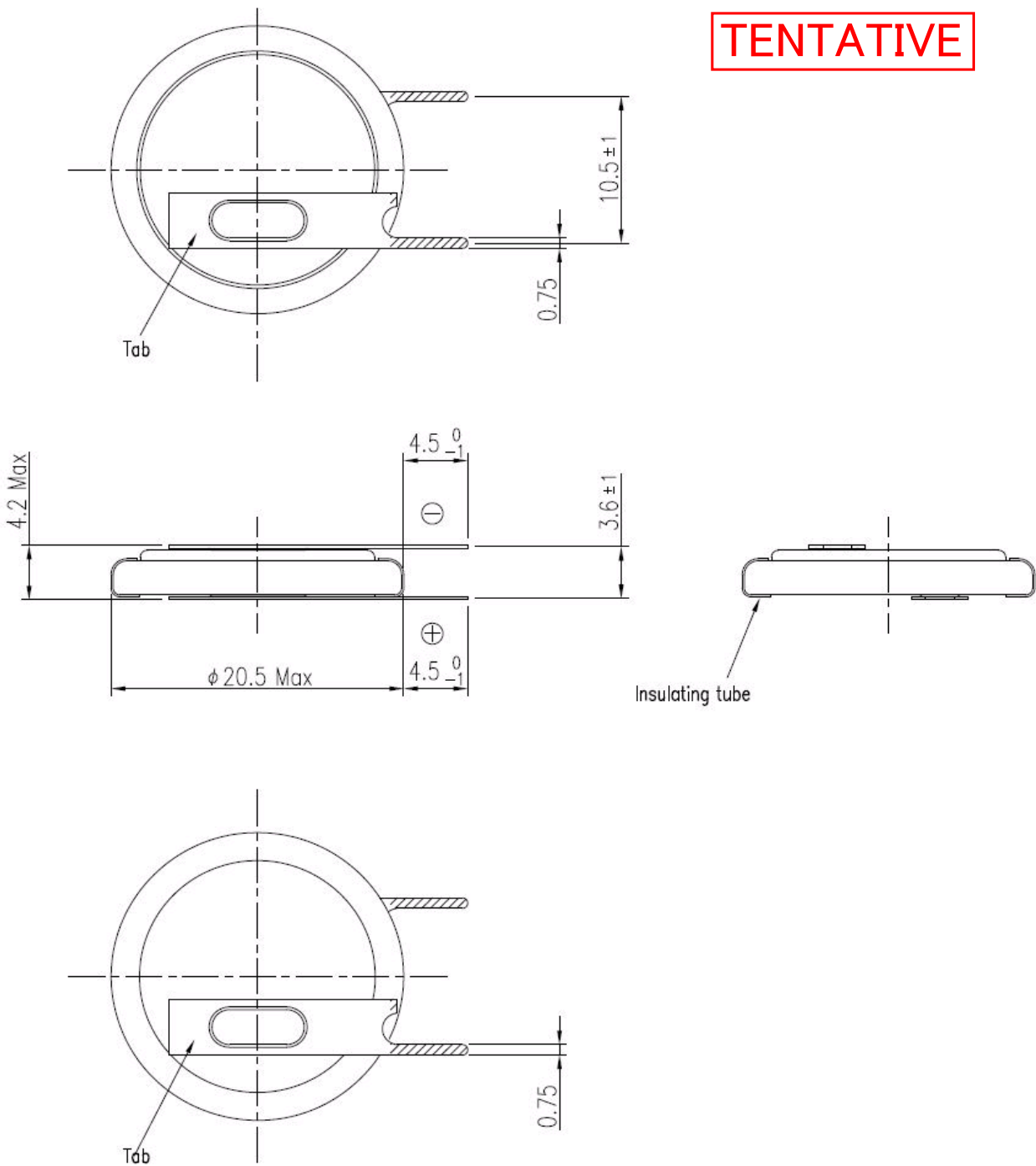
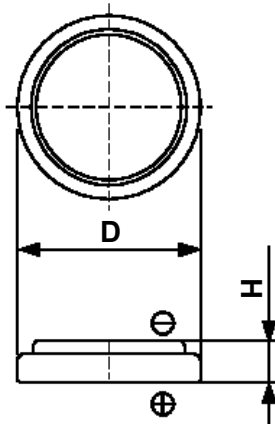


TENTATIVE



Cell Type CR2032 Specifications



Nominal Voltage (V)		3
Nominal Capacity (mAh) ^{*1}		240
Standard Discharge Current (mA)		0.3
Max. Discharge Current (mA)	Continuous ^{*2}	4
	Pulse ^{*3}	20
Operating Temperature Range (°C)		-20 ~ +70
Max. Dimensions (mm)	Diameter (D)	20.0
	Height (H)	3.2
Weight (g)		3.0

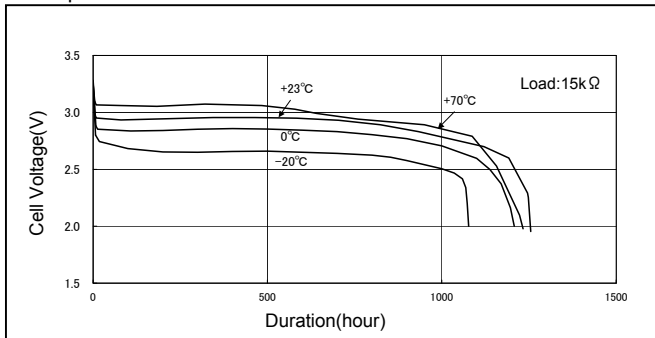
*1 Nominal capacity is determined at an end voltage of 2.0V when the battery is allowed to discharge at a standard current level at +23°C.

*2 Current value is determined to be the level at which 50% of the nominal capacity is obtained with an end voltage of 2.0V at +23°C.

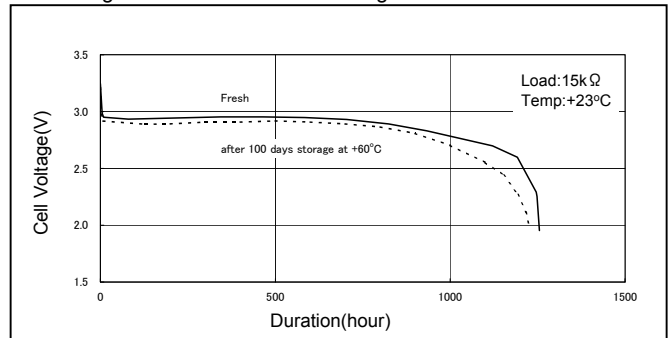
*3 Current value for obtaining 2.0V cell voltage when pulse is applied for 15 seconds at 50% discharge depth (50% of the nominal capacity) at +23°C.

Typical Characteristics

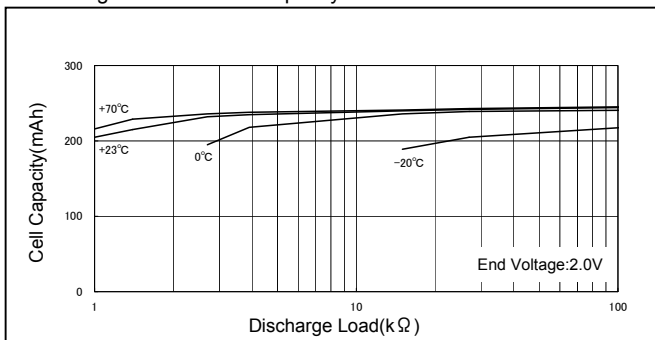
Temperature Characteristics of CR2032



Discharge Characteristics after storage of CR2032



Discharge Load vs. Cell Capacity of CR2032



Pulse Discharge Characteristics of CR2032

